

Memo

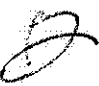
Date: April 11, 2011
To: Board of Supervisors
From: Brenda Burgess 
RE: Celebration CDD
Website Statistics

Exhibit A:

These six pages show the details for the first counter I used, NewStatPress, which was added to the website on March 25, 2011, showing the following information:

- Total visitors
- Page views
- Last pages viewed
- Last search terms used to get to our website
- Last referrers directing people to our website
- Browser information

This information was more wieldy than I thought necessary, although some of it is interesting.

Exhibit B:

I installed Count Per Day on Monday, April 11, 2011, and this single page is a better summary to show the count information and how many views each page has, as well as number of visitors and total page views. The information is much easier to read, so going forward, your website statistics page in the agenda package will be less cumbersome.

I left the total count numbers the same as what we have accumulated since March 25, 2011, but I was unable to insert the details for the past few weeks into this new counter program.





Celebration CDD

New Post

admin Log Out

Help

WordPress 3.1.1 is available! [Please update now.](#)

Dashboard

Dashboard

Updates

Count per Day

Posts

Media

Links

Pages

Comments

Appearance

Plugins

Users

Tools

Settings

NewStatPress

Overview

Details

Spy

Search

Export

Options

NewStatPressUpdate

Overview As of April 11, 2011 9:00 a.m.

	Total	Last month Mar, 2011	This month Apr, 2011	Target This month Apr, 2011	Yesterday 10 Apr, 2011	Today 11 Apr, 2011
Visitors	425	226	292 (+29.2%)	796 (+252.2%)	45	11
Pageviews	1340	632	708 (+12%)	1931 (+285.5%)	120	24
Spiders	821	302	519 (+71.9%)	1415 (+368.5%)	50	22
Feeds	21	13	8 (-38.5%)	22 (+69.2%)	0	0

23 Mar 24 Mar 25 Mar 26 Mar 27 Mar 28 Mar 29 Mar 30 Mar 31 Mar 01 Apr 02 Apr 03 Apr 04 Apr 05 Apr 06 Apr 07 Apr 08 Apr 09 Apr 10 Apr 11 Apr

Last hits

Date	Time	IP	Country/Language	Page	Feed	OS	Browser
April 11, 2011	08:51:55	64.45.239.114	en	Page: Home		Windows Server 2003	Internet Explorer 8
April 11, 2011	07:51:04	68.84.242.173	en	Page: Alley Paving		Mac OS X Snow Leopard	Firefox 3



Last search terms

Date	Time	Terms	Engine	Result
April 11, 2011	08:51:55	celebration.cdd	Google	page viewed
April 11, 2011	00:34:09	the purpose of planning celebration village, FL	Google	page viewed
April 10,	22:08:42	Non-Ad Valorem Bond Debt Assessment tax deductible	Google	page

2011						viewed
April 10, 2011	19:44:38	The reason for abundant and aggressive mosquitoes in SW Florida	April 10, 2011	Ask	page viewed	
April 10, 2011	18:24:50	celebration, fl mosquitoes		Google	page viewed	
April 10, 2011	15:59:37	celebrationcdd.org		Yandex	page viewed	
April 10, 2011	15:59:35	celebrationcdd.org		Yandex	page viewed	
April 10, 2011	11:50:39	Types of mosquitoes		Google	page viewed	
April 9, 2011	20:22:23	celebrationcdd		Google	page viewed	
April 9, 2011	18:54:32	paul meriton florida		Google	page viewed	

Last referrers

Date	Time	URL	Result
April 11, 2011	07:28:05	http://celebrationcdd.org/?page_id=238	page viewed
April 10, 2011	17:35:42	http://www.google.com/imgres?imgurl=http://www.celebrationcdd.org/wp-content/upl...	page viewed
April 10, 2011	15:36:53	http://www.celebration.fl.us/governance.html	page viewed
April 10, 2011	11:52:47	http://www.celebration.fl.us/phpBB3/viewtopic.php?f=26&t=50400	page viewed
April 10, 2011	11:44:38	http://www.celebration.fl.us/phpBB3/viewtopic.php?f=26&t=50400	page viewed
April 10, 2011	08:41:42	http://www.bing.com/search?q=www.celebrationcdd.org&form=MSN14&qs=n&...	page viewed
April 10, 2011	08:10:51	http://www.celebration.fl.us/phpBB3/viewtopic.php?f=26&t=50400	page viewed

April 9, 2011 21:44:31 <http://www.celebration.fl.us/governance.html> viewed page

April 9, 2011 20:08:05 <http://www.celebration.fl.us/phpBB3/viewtopic.php?f=26&t=50400> viewed page

April 9, 2011 18:33:31 <http://celebrationcdd.org/> viewed page

Last agents

Agent	OS	Browser/Spider
Mozilla/4.0 (compatible; MSIE 8.0; Windows NT 5.2; Trident/4.0; .NET CLR 1.1.4322; .NET CLR 2.0.50727; .NET CLR 3.0.4506.2152; .NET CLR 3.5.30729; MS-RTC EA 2)	Windows Server 2003	Internet Explorer 8
Mozilla/4.0 (compatible; MSIE 6.0; Windows 98; Win 9x 4.90)	Windows ME	Internet Explorer 6
Mozilla/4.0 (compatible; MSIE 8.0; Windows NT 6.1; WOW64; Trident/4.0; GTB6.6; SLCC2; .NET CLR 2.0.50727; .NET CLR 3.5.30729; .NET CLR 3.0.30729; Media Center PC 6.0; .NET4.0C)	Windows 7	Internet Explorer 8
Mozilla/5.0 (Macintosh; U; Intel Mac OS X 10_4_11; en) AppleWebKit/533.19.4 (KHTML, like Gecko) Version/4.1.3 Safari/533.19.4	Mac OS X Tiger	Safari
Mozilla/4.0 (compatible; MSIE 6.0; Windows NT 5.1; SV1; .NET CLR 1.1.4322; .NET CLR 2.0.50727; InfoPath.2; .NET4.0C; .NET4.0E; .NET CLR 3.0.04506.30; .NET CLR 3.0.4506.2152; .NET CLR 3.5.30729)	Windows XP	Internet Explorer 6
Mozilla/4.0 (compatible; MSIE 8.0; AOL 9.6; AOLBuild 4340.130; Windows NT 6.1; WOW64; Trident/4.0; SLCC2; .NET CLR 2.0.50727; .NET CLR 3.5.30729; .NET CLR 3.0.30729; Media Center PC 6.0; .NET4.0C)	Windows 7	Internet Explorer 8
Mozilla/4.0 (compatible; MSIE 8.0; Windows NT 5.1; Trident/4.0; .NET CLR 2.0.50727; .NET CLR 3.0.04506.648; .NET CLR 3.5.21022; .NET CLR 1.1.4322; InfoPath.2; .NET CLR	Windows XP	Internet Explorer 8

Overview: Celebration CDD — WordPress
 3.0.4506.2152; .NET CLR 3.5.30729
 Mozilla/5.0 (Windows; U; Windows NT 6.1; en-US; rv:1.9.1b2) Gecko/20081201 Firefox/3.1b2
 Mozilla/4.0 (compatible; MSIE 7.0; Windows NT 5.1; FBSMTWB; FunWebProducts; .NET CLR 1.1.4322; .NET CLR 2.0.50727; .NET CLR 3.0.4506.2152; .NET CLR 3.5.30729; WinNT-PAI 13.07.2009; 97790803; Build/14.00302; 9788098803)
 Mozilla/4.0 (compatible; MSIE 8.0; AOL 9.6; AOLBuild 4340.130; Windows NT 6.1; WOW64; Trident/4.0; SLCC2; .NET CLR 2.0.50727; .NET CLR 3.5.30729; .NET CLR 3.0.30729; Media Center PC 6.0; HPDTEF; BRI/1; .NET4.0C; BRI/2)

Windows 7
 Firefox 3
 Internet Explorer 7
 Windows XP
 Internet Explorer 8
 Windows 7
 Internet Explorer 8

Last pages

Date	Time	Page	OS	Browser
April 11, 2011	08:51:55	Page: Home	Windows Server 2003	Internet Explorer 8
April 11, 2011	08:03:47	Page: Mosquito Control	Mac OS X Snow Leopard	Mozilla
April 11, 2011	07:51:04	Page: Alley Paving	Mac OS X Snow Leopard	Firefox 3
April 11, 2011	07:49:17	Page: Success Stories	Mac OS X Snow Leopard	Firefox 3
April 11, 2011	07:48:51	Page: F.A.Q.	Mac OS X Snow Leopard	Firefox 3
April 11, 2011	07:48:36	Page: Alerts	Mac OS X Snow Leopard	Firefox 3
April 11, 2011	07:48:28	Page: Alley Paving	Mac OS X Snow Leopard	Firefox 3
April 11, 2011	07:48:11	Page: Alerts	Mac OS X Snow Leopard	Firefox 3
April 11, 2011	07:47:19	Calendar: 07/2010	Mac OS X Snow Leopard	Firefox 3
April 11, 2011	07:47:07	Calendar: 07/2010	Mac OS X Snow Leopard	Firefox 3

Last spiders

Date	Time	Spider	Agent
April 11, 2011	08:40:05	Yahoo!	Mozilla/5.0 (compatible; Yahoo! Slurp; http://help.yahoo.com/help/us/ysearch/slurp)
April 11, 2011	08:22:01	Yahoo!	Mozilla/5.0 (compatible; Yahoo! Slurp; http://help.yahoo.com/help/us/ysearch/slurp)
April 11, 2011	08:20:26	Yahoo!	Mozilla/5.0 (compatible; Yahoo! Slurp; http://help.yahoo.com/help/us/ysearch/slurp)
April 11, 2011	08:16:40	Yahoo!	Mozilla/5.0 (compatible; Yahoo! Slurp; http://help.yahoo.com/help/us/ysearch/slurp)
April 11, 2011	06:40:09	Yahoo!	Mozilla/5.0 (compatible; Yahoo! Slurp; http://help.yahoo.com/help/us/ysearch/slurp)
April 11, 2011	06:32:31	Yahoo!	Mozilla/5.0 (compatible; Yahoo! Slurp; http://help.yahoo.com/help/us/ysearch/slurp)
April 11, 2011	06:14:26	Yahoo!	Mozilla/5.0 (compatible; Yahoo! Slurp; http://help.yahoo.com/help/us/ysearch/slurp)
April 11, 2011	05:53:19	Yahoo!	Mozilla/5.0 (compatible; Yahoo! Slurp; http://help.yahoo.com/help/us/ysearch/slurp)
April 11, 2011	05:37:25	Yahoo!	Mozilla/5.0 (compatible; Yahoo! Slurp; http://help.yahoo.com/help/us/ysearch/slurp)
April 11, 2011	05:20:09	Yahoo!	Mozilla/5.0 (compatible; Yahoo! Slurp; http://help.yahoo.com/help/us/ysearch/slurp)

StatPress table size: **0,36 Mb (2182 records)**

StatPress current time: **2011-04-11 08:53:15**

RSS2 url: **<http://www.celebrationcdd.org/?feed=rss2>** (**[feed=rss2](http://www.celebrationcdd.org/?feed=rss2)**)

[WordPress](#) [Documentation](#) [Feedback](#)

Get Version 3.1.1



Celebration CDD

New Post

admin Log Out

WordPress 3.1.1 is available! Please update now.

Screen Options

Help

Dashboard

Dashboard

Updates

→ **Count per Day**

Posts

Media

Links

Pages

Comments

Appearance

Plugins

Users

Tools

Settings

NewStatPress

Overview

Details

Spy

Search

Export

Options

NewStatPressUpdate

NewStatpress blog

Media Player

Count per Day - Statistics

< February 10, 2011 Reads per day Visitors per day April 11, 2011 >

15.2.2011 22.2.2011 1.3.2011 8.3.2011 16.3.2011 2

Total visitors

Total reads **1340**
Reads today **0**
Reads yesterday **0**
Reads last week **0**
Reads April **0**

Total visitors **425**
Visitors currently on line **0**
Visitors today **0**
Visitors yesterday **0**
Visitors last week **0**
Total visitors April **0**
Visitors per day **0.00**

Visitors per month

Browsers

Firefox **0 %**
MSIE **0 %**
Chrome **0 %**
Safari **0 %**
Opera **0 %**
Other **100 %**

Reads per Country

Map

Visitors per Country

Map

Plugin

Count per Day: 2.17
Time for Count per Day: 2011-04-11 09:05
Bug? Problem? Question? Hint? Praise?
Write a comment on the plugin page.
License: Postcardware :)
Readme.txt

Reads per month

Visitors per post

Referrer

The 20 referrers in last 7 days

9 B

CELEBRATION COMMUNITY DEVELOPMENT DISTRICT
FIELD MAINTENANCE HIGHLIGHT REPORT

March - April

COMPLETED ITEMS:

- 2 full reviews and repairs to street lights, alley lights, bollard lighting, boardwalk lighting and up lighting for the month of March.
- Checked on fountain filter pump relay was tripped.
- Worked on bollard lights on boardwalks in East Village, Artisan Park and East Village.
- Checked on asphalt issue at 216 Longview and repaired pothole.
- Removed umbrella off the lake at Lakeside.
- Repaired irrigation clocks cables on Celebration Blvd., which were damaged due to a lightning strike.
- Installed irrigation and mulch at flag pole by Celebration high school.
- Performed irrigation reviews at 909 Pondview and 1024 Jeater Bend.
- Performed review in South Village for repaving project.
- Located two irrigation valves for Girard in North Village.
- Issued and distributed 459 letters to Celebration residents in South Village notifying them of the upcoming repaving project.
- Issued and distributed letters to residents on Yew Court informing them of the new tree replacement.
- Started saw cutting for driveway removal at old storage lot.
- Marked up alleyways in South Village for repairs.
- Repaired street lights at South Village and North Village.
- Cleaned filters and added chlorine at the interactive fountain.
- Met with personnel from Brasfield & Gorrie and Valley Crest regarding irrigation and sidewalk issues.
- Reviewed sod repairs and quantities in 3 locations that Girard completed.
- Turned off reuse water due to a main line break in South Village Terrace Condos.

CELEBRATION COMMUNITY DEVELOPMENT DISTRICT
FIELD MAINTENANCE HIGHLIGHT REPORT

March - April

- Removed paint from skimmer on Celebration Avenue.
- Replaced two springs on wooden swing at Spring Park Loop.
- Cleaned drain at school in Campus Street.
- Replaced two benches at Golf Park and West Park.
- Fixed bench and replaced wood on East Park and Norfolk.
- Cleaned storm drains on West Park and Front Street.
- Ground sidewalk on Celebration Ave.
- Cleaned drains on Pondview Court and Celebration Avenue.
- Filled in pot holes at Pondview Court.
- Prepped, cleaned and painted all light fixtures in Market Square and Front Street.
- Prepped, cleaned and currently painting light fixtures in Celebration Village
- Cut and removed concrete and cut roots at Starling Drive behind the school and replaced panels.
- Fixed boardwalk to do tree damages.
- Removed parking electric box at 741 Front Street, power was disconnected.
- Celebration complaint log (attached).

CELEBRATION COMMUNITY DEVELOPMENT DISTRICTS

OPERATIONS & MAINTENANCE HIGHLIGHTS

GIRARD ENVIRONMENTAL SERVICES COMPANY SUMMARY

MARCH '11 – APRIL '11

4.1 TURF

4.1.1 Mowing – Mowing was performed on a weekly basis for March 2011 throughout common areas, retention ponds and easements.

Week ending 03/04/11

Week ending 03/18/11

Week ending 04/01/11

The balance of April services will be scheduled for the weeks ending 04/08/11, 04/15/11, 04/22/11, and 04/29/11. The Southern Connector Extension (417) did not follow as listed above due to unseasonably bad weather in our area. All areas of responsibility are caught up and follow a normal routine service moving forward.

4.1.2 Edging (same as above, see 4.1.1)

4.1.3 Trimming (same as above, see 4.1.1)

4.1.4 Weed and Disease Control

a) St. Augustine – Weed and Disease Control has been applied to turf for the month of March 2011. Contractor has applied a weed and feed granular, along with a liquid application within the same week to control overwhelming weed growth in St. Augustine Turf. Contractor will continue into next month's service to apply more weed control to eradicate overpopulation in areas along Celebration Boulevard, Celebration Avenue and North Village. Spot treatments will be addressed and followed-up as needed to ensure a successful turf throughout all areas of responsibility.

b) There are no disease concerns at the moment, but areas where dieback is occurring are scheduled for replacement. Our crews continue to monitor and communicate effectively, all areas where standing water or slow runoff is affecting conditions of turf.

c) Contractor working effectively to prepare themselves for upcoming season as warmer temperatures and rapid turf growth are challenged not only by a rise in diseases, but a rise in turf

insects and weed growth which will be controlled by irrigation adjustments throughout the property.

4.1.5 Fertilization

a) Turf fertilization has been applied to Bermuda and Bahia Turf as per the scope of services. A custom blended weed and feed fertilizer has been applied, along with an insecticide component to provide supplemental control of chinch bug and other insect activity.

b) Turf treatments throughout the property has been affected by heavy rains this month, but follow-up treatments are in place and will be addressed heavily going into next month's treatment for St. Augustine turf. All areas are carefully reviewed by on-site manager and horticulture supervisor to ensure that we are applying the best product for the season.

c) As we move forward with continual treatments, we have advised our on-site staff to continue to assist in relating any irrigation breaks, weed outbreaks and all matters as it related to turf and beyond. We strive to work better at communicating amongst ourselves, let along the Owner.

4.1.6 Pest Control

a) Pest control in turf is minimal at best this time of year. Contractor has noticed that as temperatures start to climb, we need to be proactive to ward off any and all pest that will come about in turf areas throughout the property. As noted in the past, proper communication between team members is our best defense and staying on course with the scope of services will ensure that we are staying ahead of the game.

b) Our 'trash' and 'detail' teams continue to provide a proactive report by reporting all incidence that may be an issue in the turf. We are continuing to report and address the ongoing ant activity on property. The uses of proper controls are being utilized to control the queen and eradicate mound activities on property.

c) Contractor will work aggressively to ensure that pest activity in turf is controlled and held in check as we enter this unseasonable warmer season this expected. The extreme heat and afternoon rain showers make for a bad mix that ultimately will bring about pest activity in our turf that we cannot afford to ignore. As we move forward, we know our continued partnership in making this a success depends on all parties making sure that all eyes and ears are open to not letting any activity snowball throughout the property.

4.2 Shrub / Ground Cover Care

4.2.1 Pruning

a) Complete shrub and ground cover running continues per the scope of services. Our detail team performs their duties of trimming, shaping and pruning shrubs and groundcovers as

required. We are continuing to address cutback of perennial grasses on property along the common areas and retention ponds. All detail services are performed in accordance to areas of high activity and profile on property. Our focus continues to be the downtown esplanade areas, marketplace square and water street on a daily basis throughout the week.

b) Our 'detail' crews follow a strict regimen that takes them through each village where they perform their duties in ensuring that the property is maintained in a satisfactory manner. All areas are addressed at least once or twice per month as required. In some situations, the team is asked to address some emergency concerns that the Owner wishes to adhere to right away; our team moves swiftly to ensure that all problems are addressed and order is maintained.

c) Our crews are careful to maintain shrubbery and hedges by properly shearing and maintaining them as required. All trash / debris are gathered up and disposed in proper receptacles away from property.

4.2.2 Weeding

a) Our crews continue to maintain the property to acceptable levels by hand pulling large weeds on property and by the use of chemical means to eradicate on-going weed growth throughout the property. All weeding is performed in accordance to our detail rotation which is in place on a daily basis.

b) Contractor continues to make all team members take notice to report any and all areas of high weed activity or areas that may have less attention, so as to ensure that we cover each other's back on property. Weeding of beds, shrubs and concrete areas, including the 417 Corridor is of the highest importance to assure property level remains at its highest.

4.2.3 Fertilization

a) Per the scope of services, fertilization of shrubs and groundcovers is non-existent at this time. Supplemental fertilization of shrubs and groundcovers, include all perennial shrubs and flowering plants are addressed to promote flowering and growth throughout the season.

b) All fertilizers applied on property are thoroughly discharged and applied carefully, noting to keep it out of lakes and ponds throughout the property. Granular applications of a balanced fertilizer are the norm and will continue as needed.

4.2.4 Pest and Disease Control

a) All ornamental pest and disease activity remains minimal at this time. Contractor has noticed light activity on Magnolias throughout areas of property. All activity of scale, aphids and mealy bugs have been reported to proper departments to schedule and address next month.

b) Contractor is aware that reapplication of control where pest and disease are high, may be necessary to ensure that plants in question recover quickly and damage is minimal.

4.2.5 Mulching

a) Mulching of property continues for this month and with all the unseasonable weather this month, we will have to continue application of Pine Straw into next month. Crews are continuing to address the high profile areas of property first and addressing the secondary areas of property as needed, including low profile areas and retention ponds.

4.3 Tree Care

4.3.1 Pruning

a) Contractor enters another growing season with the same challenges and responsibility we encountered last season. We are formulating a detailed schedule to go through each Village of Celebration to lift and prune trees to approved heights which will allow safe passage for emergency vehicles and personal vehicles as required.

b) Our Arbor crew has been instructed to maintain an exception height of 14' – 15' height requirements by the local Fire Department. The height requirement is important as mentioned before so emergency personnel can reach their area of need without delay or obstruction.

c) Contractor to work with the Owner to provide a detailed list showing dates and villages contractor will cover in a timely manner and also implement a secondary crew to do touch work and expose any signage that may be covered by low hanging branches.

d) Contractor is careful to address all areas with care and safety, being ever mindful of their surroundings and the safety of others and their property. Any issues or concerns above our decision making will be brought to the attention of the Owner and dealt with according to his decision.

4.3.2 Fertilization

a) Contractor has instructed their crews to fertilize all medium to smaller trees as noted in our guidelines and requirements for the property. Contractor will prioritize and concentrate areas b Village and at the same time have crews raise low hanging branches and remove sucker growth from each tree on property.

4.4 Irrigation System

4.4.1 General Requirements

a) Contractor has to report that the irrigation crew in place continues to do a great job in covering their area of responsibility as it refers to the scope of services. They are communicating effectively with Russ Simmons and working to ensure that turf is adequately hydrated and is in proper working order to meet the needs of the property.

b) As with any property, there are always challenges to overcome. Our irrigation staff have been instructed to report to the proper parties any and all issues related not only to irrigation, but as it relates to the well being of this property on a daily basis.

4.6 Litter Removal

a) Contractor continues to make sure that our 'trash' crews are covering all areas of the property. Not only are they instructed to pick up trash, empty the receptacle and change the doggie pots; they are instructed to look at the property for low hanging branches, dead trees, irrigation breaks and more as they travel up and down the property on a daily basis.

b) The Contractor has instructed the crews to police the property with efficiency and to take ownership of it as it were they own. The Contractor is working with them to step up their game by communicating more and report to other team members what they see that can make all of us more accountable moving forward.

Southern Connector Extension (417)

1. Mowing: Mowing continues as normal cycle of St. Augustine service due to higher temperatures and excessive rainfall resulting in faster of Bahia Turf in this area.
2. Weeding: Herbicide spraying is ongoing in this area. Contractor is regrouping team to regain control by burning weeds with a weed eater and spraying herbicide to control weed growth.
3. Deadwood and dead tree removal continues as needed. Crews are monitoring extension more frequently to address any down or damaged trees in and along the 417 Corridor.
4. Our 'detail' and 'trash' crews are being mindful to check guardrails and signage from DOT weekly to ensure that trash / debris is being addressed and removed and disposed as needed.

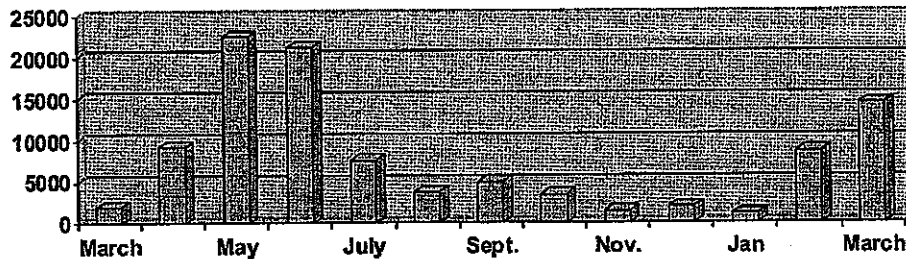
CONTRACTOR'S NOTES

As the month ends at Celebration, we look forward to continued service and dedication to our area of responsibility. Our focus and responsibility to the community is what we lean on to make us better at attaining our goals of providing superior service on a daily basis. The months ahead will be challenging for our crews, but we appreciate them as much as you appreciate us for putting a good team on site to meet and exceed the expectations that are set before us. We want you to know that we are listening to what is expected of us and always are open to receiving any criticism, whether direct or indirect that will make us stronger suited to satisfy the needs of the Celebration family. Thank you again for allowing us to service your property.



Summary of March Services

2010-2011 Trap Totals



SURVEILLANCE

Surveillance is a means of determining how many mosquitoes are active in the environment. Surveillance methods used include Landing Rate Counts and Light Traps. Landing Rate Counts are a way of determining how many mosquitoes are out biting in the neighborhood. Light traps are specialized traps, which are set in pre-determined locations to identify the number of mosquitoes, the species, and the threats of disease among the population.

- 96 landing rate counts were performed.
- 64 light traps were set, collected, & identified.

ADULTICIDING

ULV treatments are being done as weather and trap data permit. Schedule is subject to change.

- 242.3 miles were sprayed in March.

BACKPACK BARRIERS

The Backpack Barrier technique utilizes a water-based chemical applied to vegetation where mosquitoes rest. This treatment has a residual effect of 10-14 days, killing mosquitoes on contact.

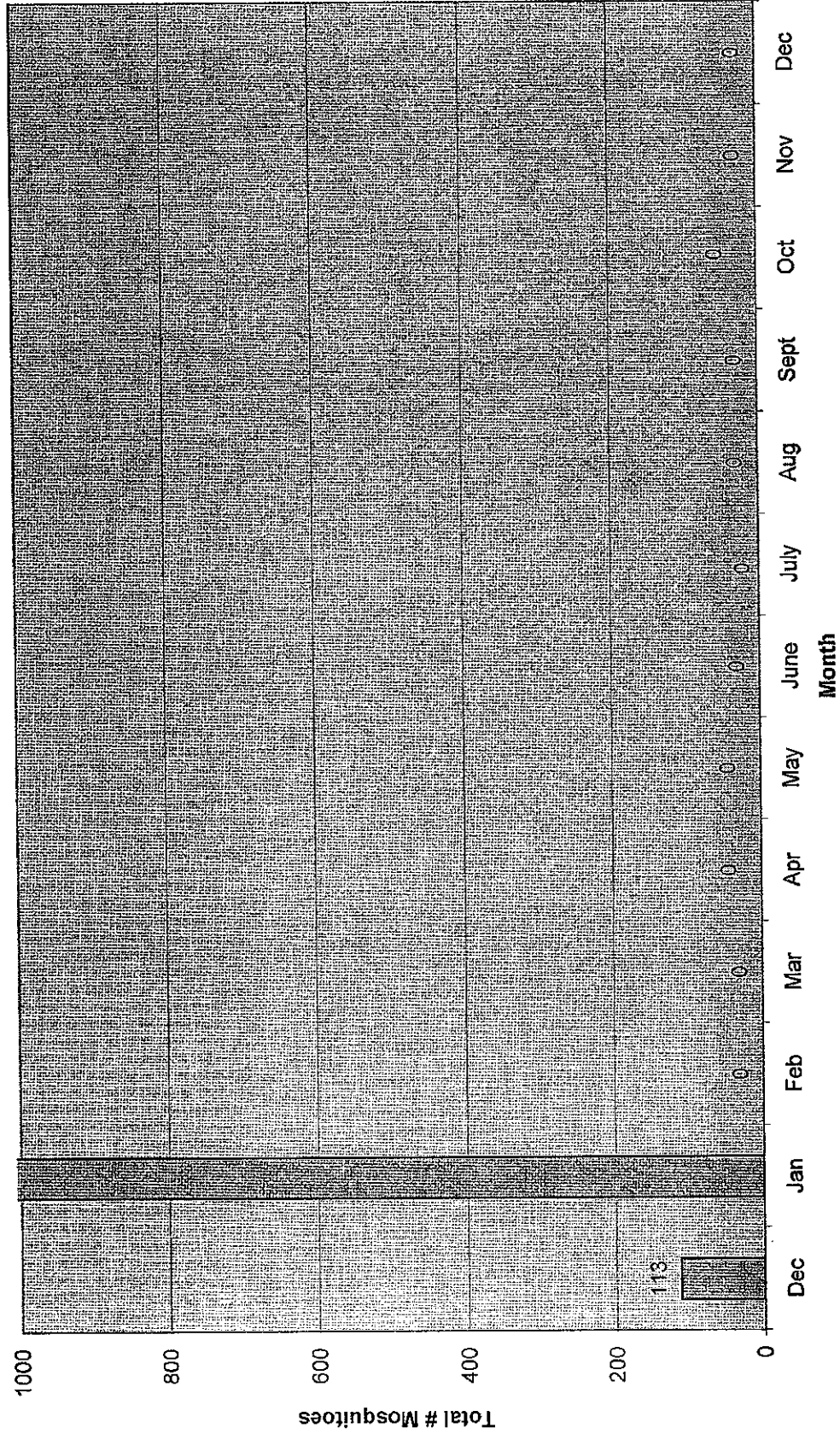
- 2 barrier treatments were applied around Lakeside Park.

INSPECTION & LARVICIDING

Inspections of bodies of water occur during the summer months to determine the numbers and species of larvae present. A biological larvicide is applied to areas breeding to prevent the mosquitoes maturing to biting adults.

- 55 sites were inspected.
- 1,119 catch basins were treated.

Celebration Light Trap Counts by Month: Dec 2010-Dec 2011



AMERICAN ECOSYSTEMS, INC.
CELEBRATION HIGHLIGHT REPORT – MARCH 2011

CELEBRATION PLACE

	<u>PLANT TREATED</u>	<u>HERBICIDE USED</u>
SCE 2	TG,PW,AW	GLY,2-4D
EP 9	TG,PW,PR,AW	GLY,2-4D
EP 5A	TG,PW,PR,FA	GLY,2-4D,HYDRA
EP 5B	TG,PW,PR	GLY,2-4D,HYDRA
EP 7	TG,AW,DW,FA	GLY,2-4D,DIQUAT,HYDRA

CELEBRATION VILLAGE

CV 1	TG,PW	GLY,2-4D
CV 2E	TG,PW,AW,SD	GLY,2-4D
CV 3	TG,PW,SD	GLY,2-4D
CV 4	TG,PW	GLY,2-4D
SCE 2-2	TG,AW,SSR,FA	GLY,2-4D,DIQUAT,HYDRA
CV 5.	TG,PW,AW	GLY,2-4D
CV 2A	TG,AW,PW	GLY,2-4D
CV 2B/C	TG,PW	GLY,2-4D
CV 2D	TG,PW	GLY,2-4D
GC 9B	TG,PW,AW	GLY,2-4D
GC 9A	TG,PW	GLY,2-4D
GC 10	TG,PW,PR	GLY,2-4D
GC 17A	TG,PW	GLY,2-4D
GC 17B	TG,PW	GLY,2-4D

NORTH VILLAGE

NV 1A	TG,PW,AW,FA,SD	GLY,2-4D,HYDRA,DYE
NV 1B	TG,AW,PW,FA,SD	GLY,2-4D,HYDRA,DYE
NV 2	TG,AW,PW,FA	GLY,2-4D,HYDRA,DYE
NV 3	TG,PW	GLY,2-4D
LV10	TG,AW,PR	GLY,2-4D

NV 4A	TG,AW,PW	GLY,2-4D
WEST VILLAGE/LAKE EVALYN		
LV 9	TG,PW,FA,AW	GLY,2-4D,HYDRA
GC 12B	TG,PW	GLY,2-4D
GC 13A	TG,PW	GLY,2-4D
GC 14	TG,PW	GLY,2-4D
SOUTH VILLAGE		
LV 6	TG,PW,AW,FA	GLY,2-4D,HYDRA,DYE
LV 3	TG,PW,H,DW,BW,FA	GLY,2-4D,HYDRA,DIQUAT,DYE
LV 5	TG,PW,AW,FA,PA	GLY,2-4D,HYDRA
GC 15B	TG,PW,DW	GLY,2-4D,HYDRA
LV 7	TG,PW,AW,FA	GLY,2-4D,HYDRA,DYE
LV 2	TG,AW,PW,FA	GLY,2-4D,HYDRA
ROSEVILLE CORNER		
SV 21A	TG,PW,FA	GLY,2-4D,HYDRA,DYE
EAST VILLAGE		
LV 8	TG,PW,AW,FA	GLY,2-4D,HYDRA
LV 8A	TG,PW,FA	GLY,2-4D,HYDRA,DYE
SV 22	TG,PW,FA,PA,DW	GLY,2-4D,HYDRA,DYE
SV 25A	TG,PW,AW,CT,FA	GLY,2-4D,HYDRA,DYE
AQUILA RESERVE		
SV 26	TG,PW,FA	GLY,2-4D,HYDRA,DYE
SV 27	TG,PW,PR,CT	GLY,2-4D
SV 28	TG,PW,CT,DW,FA	GLY,2-4D,HYDRA,DIQUAT
ARTISAN PARK		
SV 9	TG,PW,AW,CT	GLY,2-4D,HYDRA,DYE
SV 11	TG,PW,AW,FA	GLY,2-4D,HYDRA,DYE
SV 12	TG,PW,FA,SSR	GLY,2-4D,DIQUAT,HYDRA,DYE
SV 13	TG,PW,PA	GLY,2-4D,DYE
SV 14	TG,PW,FA	GLY,2-4D,DYE
SV 17	TG,PW,AW,FA	GLY,2-4D,HYDRA,DYE
SV 18	TG,PW,PA	GLY,2-4D,HYDRA,DYE
SV 19	TG,PW,FA	GLY,2-4D,HYDRA,DYE
CELEBRATION BLVD		
SV 6B2	FA,TG	GLY,HYDRA,DYE
HS 1	TG,PR,PW,AW	GLY,2-4D
HS 2	CT,TG,PW	GLY,2-4D
HS 3	TG,PW,CT	GLY,2-

LEGEND

FA-Filamentous Algae

PA-Planktonic Algae

CH-Chara

DW-Duckweed

SSR-Slender Spikerush

BW-Bladderwort

H-Hydrilla

PW-Pennywort

AW-Alligator Weed

TG-Torpedo Grass

PW-Primrose Willow

CELEBRATION COMMUNICATION LOG

Date	Description of complaint	Location	WO Made	Comments	Status	Completed By	Date
4/1/2011	streetlight out	1014 Tapestry Ln.	Yes			Todd/Jeb	
4/1/2011	request for mosquito spray	Artisan Park condos	email			Clarke Mosquito	
4/8/2011	streetlight out	1013 Tapestry Ln.	Yes	AP211		Todd	
4/8/2011	several boardwalk lights out	between Oak Shadows & Aquila Loop	Yes			Todd	
4/8/2011	storm drain full of debris	506 Water St.	Yes			Alan	
4/8/2011	boardwalk lights out	between Oak Shadows & Aquila Loop	Yes			Todd	
4/7/2011	grind down sidewalk	902 Celebration Ave.	Yes		Complete	Alan	
4/7/2011	streetlight globe broken	225 Celebration Blvd.	Yes	replaced globe and cleaned up mess	Complete	Jeb	4/8/2011
4/7/2011	streetlight out	420 Arbor Circle	Yes			Jeb	
4/7/2011	alley light out	1012 Jeater Bend	Yes			Jeb	
4/8/2011	alley indentation	1018 Wild Elm	Yes	widen radius with concrete? (Russ)		Brian	
4/4/2011	alley concern	1214 Roycroft Ave.	Yes				
4/4/2011	streetlight out	1007 Periwinkle	Yes	SV161 lamp	Complete	Jeb	
4/1/2011	streetlight out	1019 Maiden Terrace	Yes	SV137 lamp	Complete	Jeb	4/4/2011
3/31/2011	storm drain flooded	917 Pondview Ct.	Yes		Complete	Alan	
3/30/2011	wondering about concrete grind	1208 Celebration Ave.			Complete	Alan	3/30/2011
3/30/2011	no-see-ums	827 Spring Park Loop	Email	Clarke contacted resident	Complete	Clarke Mosquito	
3/30/2011	mosquitos	1007 Indigo	Email	Clarke contacted resident	Complete	Clarke Mosquito	3/30/2011
3/30/2011	potholes	216 Longview		Maegen made WO from Brian	Complete	Russ/Nelson	4/4/2011
3/29/2011	request for mosquito spray	732 Mulberry	Email			Clarke Mosquito	
3/29/2011	wonders why gas line warning sign still there	East Park Drive & Celebration Blvd.	Email			Brian	
3/28/2011	pond has algae (LV8A)	Greenlawn & Pondview Lane	Email		Complete	Amer.Ecosystems	
3/28/2011	streetlight out	Artisan Park	Yes	AP310	Complete	Jeb	
3/24/2011	alley light out, part of pole missing?	228 Longview	Yes	NV291 lamp	Complete	Jeb	3/24/2011
3/24/2011	request for mosquito spray	528 Greenbrier Ave.	Email		Complete	Clarke Mosquito	4/4/2011
3/23/2011	streetlight out	880 Spring Park Loop	Yes	SV87 lamp	Complete	Jeb	3/23/2011
3/23/2011	sidewalk is cracked & bulging	Celebration Ave. & Persimmon	Yes	ground down	Complete	Alan	3/22/2011
3/22/2011	request for mosquito spray	Craton Place cul de sac	Email		Complete	Clarke Mosquito	3/22/2011
3/22/2011	request for mosquito spray	Pawstand	Email		Complete	Clarke Mosquito	3/22/2011
3/22/2011	bench partially destroyed	Norfolk & East Park Dr.	Yes	replaced wood slat	Complete	Alan	3/22/2011
3/22/2011	request for mosquito spray	Oak Shadows	Email		Complete	Clarke Mosquito	4/7/2011
3/22/2011	streetlight out	Towhee	Yes	EV138 lamp, ballast	Complete	Jeb	3/22/2011
3/21/2011	request for mosquito treatment	1104 Oak Pond Dr.	Email		Complete	Clarke Mosquito	3/22/2011
3/21/2011	request for mosquito spray	playground in North Village	Email		Complete	Clarke Mosquito	
3/17/2011	streetlight out	Celebration Blvd/KinderCare	Yes	Jeb says it's working; monitoring	Complete	Jeb	
3/17/2011	3 lights out	Artisan Park	Yes	AP376, AP365, AP369	Condo Lights		
3/17/2011	bench replaced	928 West Park Drive	Yes		Complete	Alan	3/17/2011
3/17/2011	pond needs treatment	Spring Park Loop/LV3	Email		Complete	Amer.Ecosystems	3/17/2011
3/16/2011	install light shield	1000 Tapestry Ln.	Yes	AP219 shielded	Complete	Todd	3/15/2011
3/15/2011	alley light out	Indigo/Oak Shadows	Yes	EV361	Complete	Todd	3/14/2011
3/15/2011	possible rabid raccoon	Aquila Loop/Oak Shadows	No		Complete	Todd	
3/14/2011	streetlights out	Nash & White Moss	Yes	SVB38, 39, 40 photocells	Complete	Todd	3/14/2011
3/14/2011	call about resident not picking up dog feces	145 Longview		Referred to CROA	Complete	CROA	
3/11/2011	alley light out	106-108 East Park Drive	Yes	NV367 photocell & fuse	Complete	Todd	3/11/2011
3/10/2011	streetlight out	900 Spring Park Loop	Yes	SV105 lamp	Complete	Todd	3/10/2011
3/10/2011	streetlight out	910 Spring Park Loop	Yes	SV111 lamp	Complete	Todd	3/10/2011
3/9/2011	streetlight out	935 Pawstand	Yes	SV268 lamp	Complete	Todd	3/11/2011

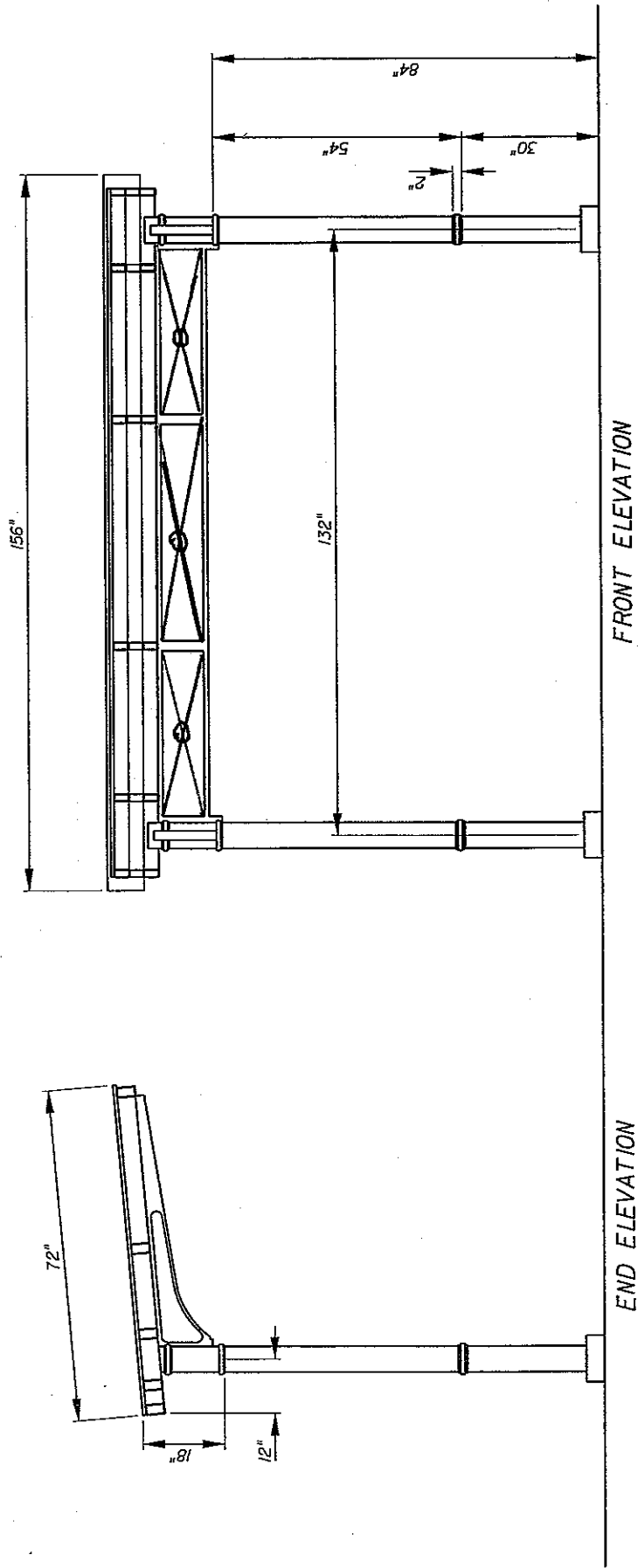
CELEBRATION COMMUNICATION LOG

Date	Description of complaint	Location	WO Made	Comments	Status	Completed By	Date
3/7/2011	streetlight out	790 Oak Shadows	Yes	EV210	Complete	Jeb	3/8/2011
3/7/2011	streetlight out	900 Spring Park Loop	Yes	SV107	Complete	Jeb	3/8/2011
3/9/2011	request for mosquito spray	Nash Dr.	Email	Will resume Monday, March 7	Complete	Clarke Mosquito	3/7/2011
3/1/2011	streetlight out	Pondview Ct. & Runner Oak	Yes	lamp	Complete	Todd	3/1/2011
3/1/2011	streetlight out	509-311 Longmeadow	Yes	CV557 lamp & starter	Complete	Todd	3/2/2011
3/1/2011	alley light out	821-823 Verandah Pl.	Yes	# 844 lamp & photocell	Complete	Todd	3/1/2011

9G







FRONT ELEVATION

END ELEVATION

LYNX 6'X13' BUS
PASSENGER SHELTER

**Stop #6416 (8' SIDEWALK)
215 Celebration Place**

Description	Quantity	Units	Unit Cost	Sub-total	Item Total
Construct LYNX 6'x13' Shelter Foundation Only	1	EA	\$4,950.00	\$4,950.00	
Install LYNX 6'x13' Shelter Only	1	EA	\$2,247.00	\$2,247.00	
4" thick sidewalk (including excavation)	3126	SF	\$4.10	\$12,816.60	
Sodding - Bahia	898	SF	\$0.61	\$547.78	
Additional transportation costs from Spencer/Kemco Fabric	1	EA	\$800.00	\$800.00	
Additional fees for Lightning protection upgrade	0	EA	\$49.80	\$0.00	
Construction Cost Total				\$21,361.38	\$21,361.38

Description	Quantity	Units	Unit Cost	Sub-total	Item Total
Shelter Manufacturer's Cost	1	EA	\$6,744.00	\$6,744.00	
Manufacturer's Cost Total					\$6,744.00

Construction Cost Total					\$21,361.38
Manufacturer's Cost Total					\$6,744.00
Total					\$28,105.38

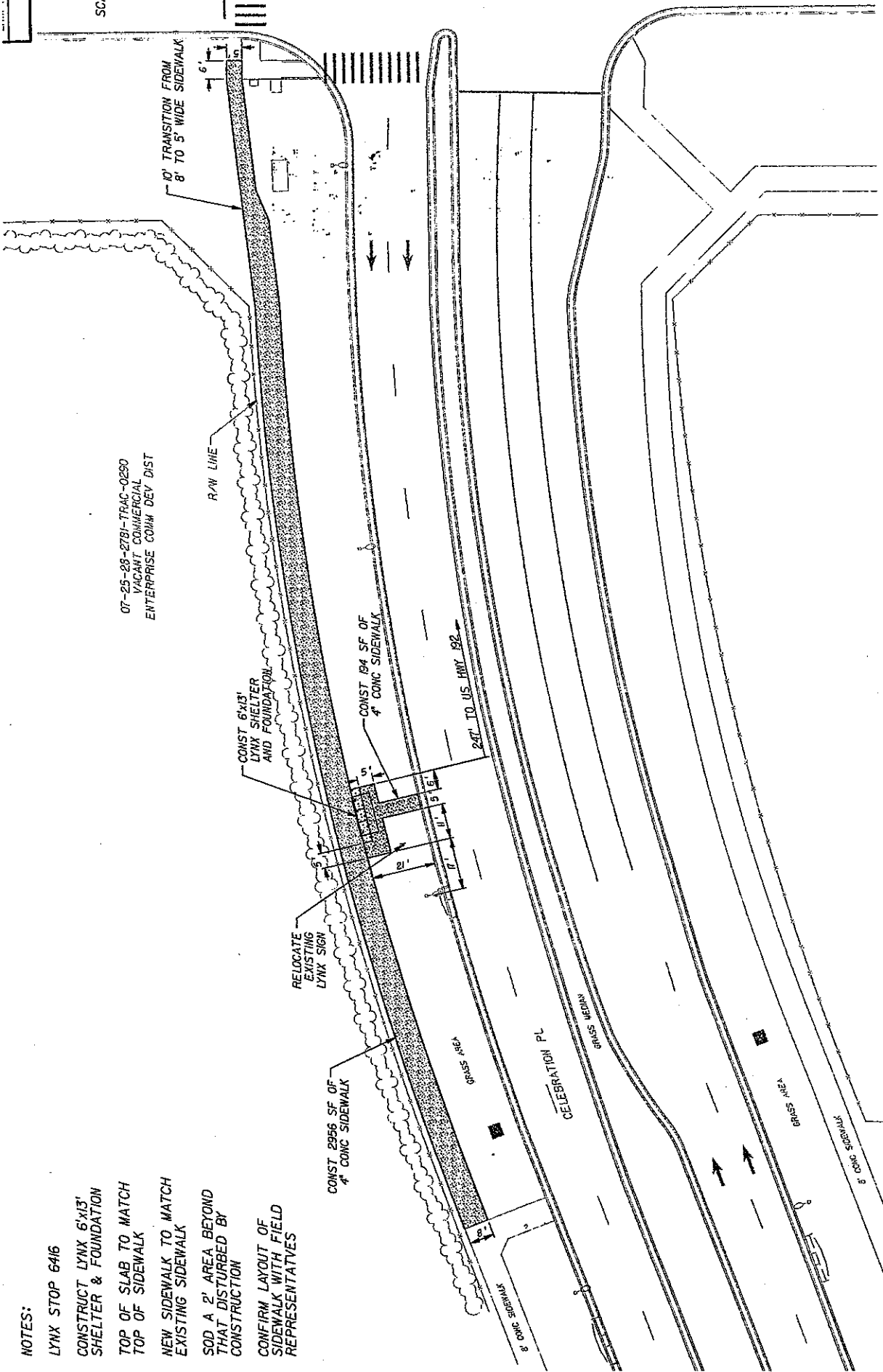
**Stop #6416 (5' SIDEWALK)
215 Celebration Place**

Description	Quantity	Units	Unit Cost	Sub-total	Item Total
Construct LYNX 6'x13' Shelter Foundation Only	1	EA	\$4,950.00	\$4,950.00	
Install LYNX 6'x13' Shelter Only	1	EA	\$2,247.00	\$2,247.00	
4" thick sidewalk (including excavation)	2179	SF	\$4.10	\$8,933.90	
Sodding - Bahia	898	SF	\$0.61	\$547.78	
Additional transportation costs from Spencer/Kemco Fabric	1	EA	\$800.00	\$800.00	
Additional fees for Lightning protection upgrade	0	EA	\$49.80	\$0.00	
Construction Cost Total				\$17,478.68	\$17,478.68

Description	Quantity	Units	Unit Cost	Sub-total	Item Total
Shelter Manufacturer's Cost	1	EA	\$6,744.00	\$6,744.00	
Manufacturer's Cost Total					\$6,744.00

Construction Cost Total					\$17,478.68
Manufacturer's Cost Total					\$6,744.00
Total					\$24,222.68

8' Option					\$28,105.38
5' Option					\$24,222.68
Difference					\$3,882.70



07-25-23-2781-TRAC-0290
VACANT COMMERCIAL
ENTERPRISE COMM DEV DIST

R/W LINE

CONST 6'x13'
LYNX SHELTER
AND FOUNDATION

CONST 194 SF OF
4" CONC SIDEWALK

RELOCATE
EXISTING
LYNX SIGN

CONST 2956 SF OF
4" CONC SIDEWALK

24' TO US HWY 192

GRASS AREA

CELEBRATION PL

GRASS MEDIAN

GRASS SHOULDER

8" CONC SIDEWALK

- NOTES:
- LYNX STOP 6416
 - CONSTRUCT LYNX 6'x13' SHELTER & FOUNDATION
 - TOP OF SLAB TO MATCH TOP OF SIDEWALK
 - NEW SIDEWALK TO MATCH EXISTING SIDEWALK
 - SOD A 2' AREA BEYOND CONSTRUCTION
 - CONFIRM LAYOUT OF SIDEWALK WITH FIELD REPRESENTATIVES

PROPOSED LYNX SHELTER
215 CELEBRATION PL,
CELEBRATION, FLORIDA

CENTRAL FLORIDA REGIONAL
TRANSPORTATION AUTHORITY

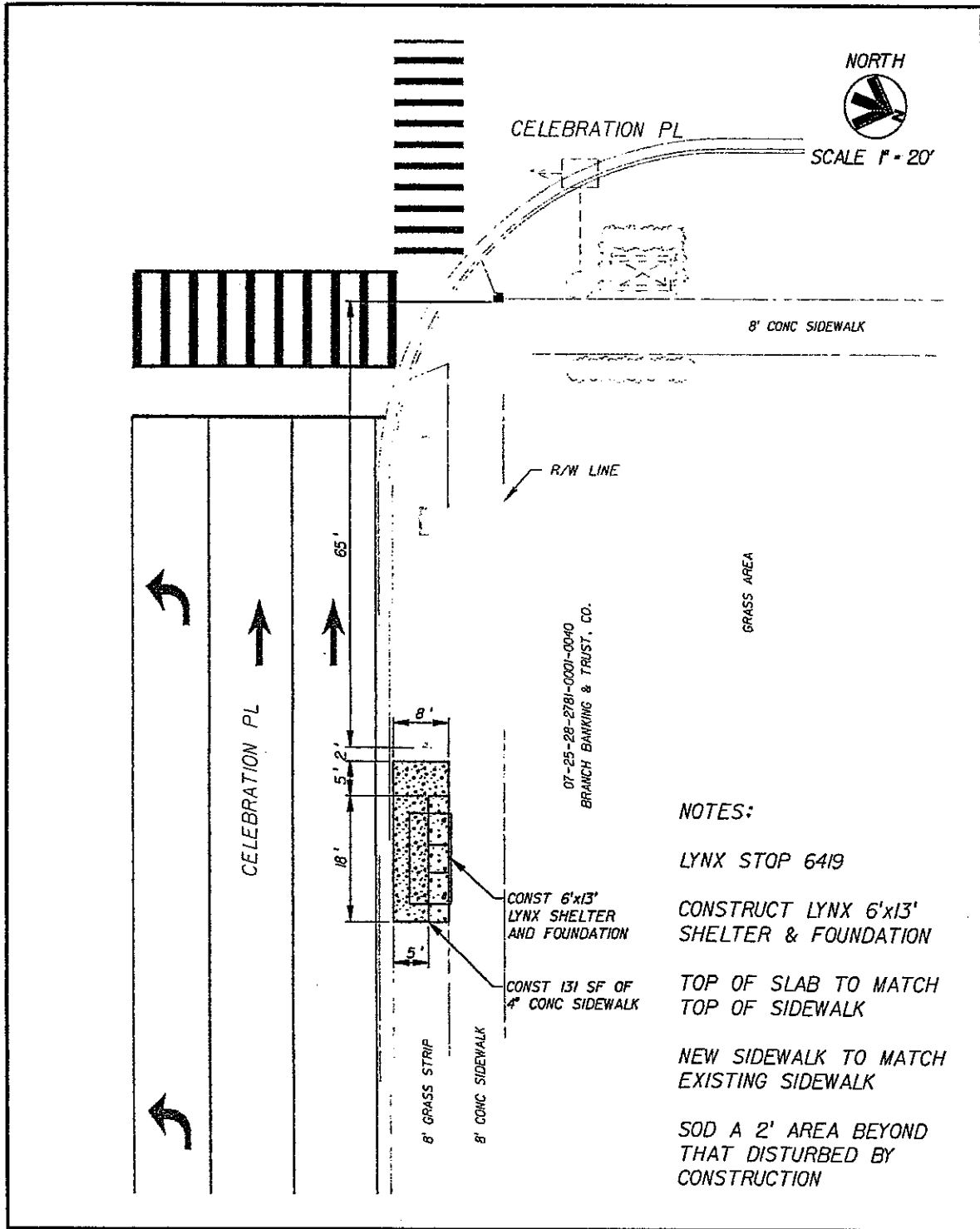


CHRISTOPHER MARTIN, EL. P. 8145
130 NORTH ORANGE AVE., SUITE 200
ORLANDO, FL, 32801
407.284.4814

AECOM
CERTIFICATION OF AUTHORIZATION NO. 8115

DATE	BY	DESCRIPTION	REV.	DATE	BY	DESCRIPTION

2/15/2011 4:12:31 PM
 DESIGN FILE: L:\60148084-LYNX shelter\4000 Technician\006 CIVIL\006.2 Site Carr\lor\Disney\Celebration proposed shelter location\6419 prop.dgn



AECOM

CHRISTOPHER MARTIN, FL PE # 68445
 TRANSPORTATION
 AECOM TECHNICAL SERVICES, Inc.
 150 N Orange Ave, Suite 200
 Orlando, FL 32837
 T 407.643.6552 F 407.284.4855
 Certificate of Authorization No. 8116



LYNX
 CENTRAL FLORIDA REGIONAL
 TRANSPORTATION AUTHORITY

PROPOSED LYNX SHELTER
221 CELEBRATION PL.
CELEBRATION, FLORIDA

NOTES:

LYNX STOP 5885

COMBINE STOPS 5885
AND 6421

CONSTRUCT LYNX 6'x13'
SHELTER & FOUNDATION

TOP OF SLAB TO MATCH
TOP OF SIDEWALK

NEW SIDEWALK TO MATCH
EXISTING SIDEWALK

REMOVE EXISTING
SIDEWALK AS REQ'D TO
ACCOMMODATE FOOTING

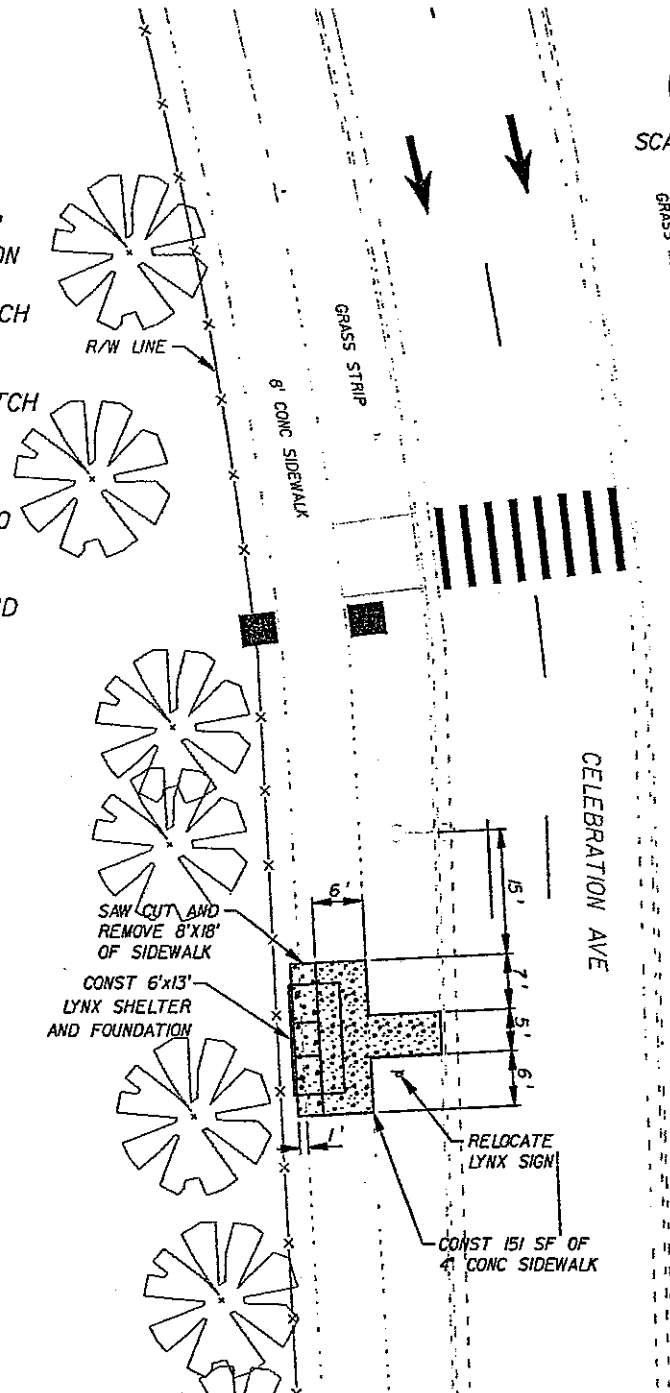
SOD A 2' AREA BEYOND
THAT DISTURBED BY
CONSTRUCTION

NORTH



SCALE 1" = 20'

GRASS MEDIAN



07-25-08-2701-TRAC-0160
ENTERPRISE COMM DEV DIST

2/21/2011 10:00:39 AM DESIGN FILE: L:\G01\4062\4062 CIVIL\4062 Site Corridor\Disney\Celebration proposed shelter locations\5885 prop.dgn

AECOM

CHRISTOPHER MARTIN, FL PE # 66445
TRANSPORTATION
AECOM TECHNICAL SERVICES, Inc.
150 N Orange Ave, Suite 200
Orlando, FL 32801
T 407.643.0552 F 407.294.4855
Certificate of Authorization No. 8115



CENTRAL FLORIDA REGIONAL
TRANSPORTATION AUTHORITY

**PROPOSED LYNX SHELTER
CELEBRATION AVE.
CELEBRATION, FLORIDA
WATER TOWER PLACE WEST**

EXECUTION
COPY

11-A54

NON-EXCLUSIVE REVOCABLE LICENSE AGREEMENT

CCDD
ECAD
ADD/ISS

THIS NON-EXCLUSIVE REVOCABLE LICENSE AGREEMENT ("Agreement") is made effective as of the 27th day of October, 2010 (the "Effective Date") by and between ~~REEDY CREEK IMPROVEMENT DISTRICT~~, a public corporation and public body corporate and politic of the State of Florida, whose mailing address is Post Office Box 10170, Lake Buena Vista, Florida 32830-0170 ("Licensor"), and CENTRAL FLORIDA REGIONAL TRANSPORTATION AUTHORITY, d/b/a LYNX, a body politic and corporate, created by Part II, Chapter 343, Florida Statutes, whose address is 455 North Garland Avenue, Orlando, Florida ("Licensee").

WITNESSETH:

WHEREAS, Licensor is the fee owner of certain real property as more particularly described on Exhibit "A" attached hereto and made a part hereof (the "License Area"); *should there be an exhibit A for all 4?*

WHEREAS, Licensee desires to obtain a non-exclusive revocable license for itself, or its agents, invitees, guests, and employees, over and across the License Area to provide for the operation and maintenance of a bus shelter and for no other purpose; and

WHEREAS, Licensor agrees to grant Licensee this non-exclusive revocable license subject to the terms and conditions set forth below.

NOW, THEREFORE, in consideration of the foregoing premises, the mutual agreement of the parties hereto, and other good and valuable consideration, the receipt and sufficiency of which are hereby acknowledged, the parties hereby agree as follows:

1. RECITATIONS.

The above recitations are true and correct and form a material part of this Agreement.

2. GRANT AND USE OF LICENSE.

Licensor grants to Licensee a non-exclusive revocable license (the "License") over and across the License Area only for construction and maintenance of a bus shelter as more particularly described on Exhibit "B" and for the use of Licensee and its employees and Licensee invitees as a location to acquire and discharge bus passengers using Licensee's system. Construction of the bus shelter shall be in substantial conformance with specifications set forth on Exhibit "B" and shall be completed on or before May 1, 2011; provided, that if Licensee works in good faith to timely obtain all necessary permits for the construction of the bus shelter and such permits are not obtained by December 31, 2010, then the May 1, 2011 deadline shall be tolled for the duration of time that it takes for Licensee to obtain such permits. This License creates a license only over, upon and across the License Area and only during the Term (as hereinafter defined) and Licensee acknowledges that Licensee does not and shall not (at any

2 the sum pre-determined by the parties to be Fifteen Thousand Dollars (\$15,000) amortized over five (5) years (1,826 days). By way of example, if this Agreement is terminated by Licensor after one hundred (100) days, the total reimbursement payable to Licensee shall be the difference between Fifteen Thousand Dollars (\$15,000) and Eight Hundred Twenty One Dollars (\$821) equaling Fourteen Thousand One Hundred Seventy Nine Dollars (\$14,179). In order to avoid any doubt, in the event Licensor elects to terminate this Agreement as aforesaid at any time after October 22, 2015 Licensor shall not be obligated to pay any fees to Licensee or otherwise compensate or reimburse Licensee in any manner as a result of Licensor's election to terminate this Agreement. In the event Licensee elects to terminate this Agreement at any time, Licensor shall not be obligated to compensate or reimburse Licensee in any manner as a result of Licensee's election to terminate this Agreement. Notwithstanding the foregoing, this provision does not modify the "termination for cause" provision.

3.3. Notwithstanding anything to the contrary set forth in Sections 3.1 and 3.2 Licensee may, in its sole and absolute discretion, terminate this Agreement by providing Licensor ninety (90) days prior written notice of its intent to terminate. Upon termination, Licensee shall, at its sole cost and expense, remove all articles and facilities placed by it and return the License Area to the same condition as it was presented upon inception of the License.

4. LIMITATION OF RIGHTS.

This Agreement creates a non-exclusive License, and Licensee does not and shall not (at any time) claim any interest or estate of any kind or extent whatsoever in the License Area by virtue of this License or Licensee's use of the License Area pursuant hereto. Furthermore, no facilities, except as shown on Exhibit "B", shall be constructed, signage/advertising placed, or any alterations made on the License Area without the prior written consent of Licensor, which consent Licensor may grant or withhold in its sole and absolute discretion.

5. LICENSOR'S RESERVATION OF RIGHTS.

Subject to the rights created herein, Licensor expressly reserves the right to use, or to grant to others the right to use by virtue of any rights, licenses, rights-of-way, reservations, or easements, any and all portions of the area upon, above, or under the License Area (in Licensor's sole discretion) for any purpose whatsoever not inconsistent with the rights herein granted, including, but not limited to, the right of ingress and egress over and across the License Area onto any adjacent or contiguous property, provided such right does not unreasonably interfere with Licensee's permitted use of the License Area pursuant to the terms hereof. Licensor also reserves the right, but not the obligation, to do all or any of the following without Licensee's consent:

5.1. construct improvements; landscape; provide for drainage; construct paved roads, bridges, tunnels, driveways, parking areas or any other improvements; and install utility lines, equipment and cables upon, above or under the License Area or Licensor's adjacent property, so long as such use does not materially, and adversely interfere with the purpose for which this License is granted;

Licensor (or any other party) of the License Area, Licensor's adjacent property, or any other adjacent properties, if any; and (ii) any other activity or use by Licensor or any other party now or in the future existing on or about the License Area and Licensor's adjacent property, so long as such use does not materially and adversely interfere with Licensee's permitted use of the License Area.

6.4. Com ply at all times and in all respects with all present and future local, municipal, county, state and federal environmental and all other applicable laws, statutes, governmental constitutions, ordinances, codes, rules, regulations, resolutions, requirements, standards, applications and directives, as well as all decisions, judgments, writs, injunctions, orders, decrees or demands of courts, administrative bodies and other authorities construing any of the foregoing (collectively, the "Laws"), and Licensee shall obtain, maintain and comply with all applicable permits in connection with Licensee's use of the License Area. Licensee shall not, by any act or omission, render Licensor liable for any violation thereof.

6.5. Not permit any lien to be filed against the License Area or Licensor's adjacent Property for any labor or materials in connection with work of any character performed or claimed to have been performed on the License Area or Licensor's adjacent Property at the direction or sufferance of Licensee. If any such lien is filed against the License Area or Licensor's adjacent Property, Licensor shall have the right (but not the obligation) to cause such lien to be released. Licensee shall pay on demand all of Licensor's costs in connection therewith, together with interest thereon at an interest rate equal to twelve percent (12%) per year accruing from and after the date of such expenditure until Licensor's receipt of full payment therefor.

7. CONDITION OF LICENSE AREA

7.1. Reasonable Care.

In consideration of being allowed to use the License Area, Licensee agrees, for itself, its agents and invitees, to use reasonable care so as to not damage or destroy the License Area or any property thereon, to remove all trash and debris deposited by it on the License Area during installation of the bus shelter and to assume all risks inherent in entering upon the License Area.

7.2. Condition of License Area.

Licensee acknowledges that it (i) has physically inspected the License Area; and (ii) accepts the License Area "AS IS" AND "WHERE IS" with full knowledge of the condition thereof and subject to all of the terms, conditions, restrictions and limitations applicable thereto; *provided however*, that the foregoing notwithstanding, Licensee has not undertaken an environmental site assessment with regard to the License Area, and assumes no responsibility for any Hazardous Materials Contamination that existed on the License Area or adjacent areas prior to the Effective Date. The term "Hazardous Materials Contamination" shall mean and refer to the contamination of the License Area, soil, surface water, ground water, air, or other elements on, or of, the buildings, facilities, soil, surface water, ground water, air, or other elements on, or of,

11. NOTICES.

All notices and other communications given pursuant to this Agreement to be served, given or delivered upon either party shall be in writing and shall be sent by registered or certified mail, return receipt requested, or by a national overnight receipted delivery service (e.g., Federal Express). Such notices shall be deemed served, given and delivered on the earlier of the following: (i) the date of actual receipt; (ii) the third business day after any registered or certified notice was deposited in a sealed envelope in the United States mail, postage prepaid; (iii) the next business day after any notice was delivered (on a business day) to a receipted overnight delivery service; or (iv) the first attempted delivery date of any notice hereunder (regardless of whether the recipient of said notice accepted same). All notices shall be addressed as hereinbelow set forth, or to such other address as the Licensor or Licensee shall hereafter give notice to the other in writing:

If to Licensor: Reedy Creek Improvement District
Post Office Box 10170
Lake Buena Vista, Florida 32830-0170
Attention: Bill Warren, District Administrator
Facsimile: (407) 934-6200

With a copy to: Walt Disney World Resort
Post Office Box 10000
Lake Buena Vista, Florida 32830-1000
Attention: General Counsel

If to Licensee: LYNX
Chief of Administration
455 North Garland Avenue
Orlando, Florida 32801-1518

With a copy to: Akerman Senterfitt
420 South Orange Avenue, Suite 1200
Orlando, Florida 32801-4904
Attention: Patrick T. Christiansen

12. COUNTERPARTS.

This Agreement may be executed in counterparts, each of which shall be deemed to be an original and all of which shall together constitute one and the same instrument

13. GOVERNING LAW.

This Agreement shall be governed by, construed under and interpreted and enforced in accordance with the laws of the State of Florida.

14. JURISDICTION.

IN WITNESS WHEREOF, the parties hereto have executed this Agreement as of the Effective Date hereinabove set forth.

REEDY CREEK IMPROVEMENT DISTRICT

CENTRAL FLORIDA REGIONAL
TRANSPORTATION AUTHORITY

By: Bill Warren (Signature)
Bill Warren, District Administrator

10/27/10

By: [Signature] (Signature)
Edward L. Johnson (Print Name)

Integrin CEO (Title)

This Agreement is approved as to form for reliance only by Licensee and for no other person and for no other purpose.

AKERMAN SENTERFITT, Counsel for Licensee

By: [Signature] (Signature)
Patrick T. Christiansen, Esq. (2)

PARCEL 5

A parcel of land lying in Section 30, Township 24 South, Range 28 East, Orange County, Florida, and being more particularly described as follows:

Commence at the Southwest corner of said Section 30, run along the West line of the Southwest 1/4 of said Section 30, N 00°03'22" W, 1562.46 feet; thence N 90°00'00" E, 1233.97 feet to the Point of Beginning, thence N 78°14'52" E, 17.36 feet; thence S 11°45'08" E, 5.37 feet; thence N 78°14'52" E, 3.90 feet; thence S 11°31'59" E, 15.00 feet; thence S 78°14'52" W, 3.84 feet; thence S 11°45'08" E, 5.37 feet; thence S 78°14'52" W, 17.36 feet; thence N 11°45'08" W, 25.73 feet to the Point of Beginning.

**6x13 SHELTER
STRUCTURAL DESIGN CALCULATIONS**

MAIN WIND FORCE RESISTING SYSTEM

FBT #08-04.03



Mark Niedermann
5/15/09

**Prepared By:
Florida Bridge and Transportation, Inc.
Certificate of Authorization No. 26379
PO Box 947777
Maitland, Florida 32794-7777
(407) 647-1922**

May 2009

**Engineer of Record
Mark Niedermann, P.E. # 45957**

Importance Factor [6.5.5]

P.2

Table 6-1 for Category II Structure

Velocity Pressure [6.5.10]

$$q_h := 0.00256 K_z K_{zt} K_d V^2 \cdot I \cdot \text{psf}$$

$$q_h = 36.25 \cdot \text{psf}$$

Main Wind-Force Resisting System [6.5.10]

$$p_1 := q_h \cdot G \cdot C_{NW} \quad \text{Windward side pressure from load Case A}$$

$$p_1 = 39.19 \cdot \text{psf}$$

$$p_{\text{uplift}_1} := q_h \cdot G \cdot C_{NL} \quad \text{Leeward side pressure from load Case A}$$

$$p_{\text{uplift}_1} = 9.8 \cdot \text{psf}$$

$$p_2 := q_h \cdot G \cdot C_{NW2} \quad \text{Windward side pressure from load Case B}$$

$$p_2 = -35.92 \cdot \text{psf}$$

$$p_{\text{uplift}_2} := q_h \cdot G \cdot C_{NL2} \quad \text{Leeward side pressure from load Case B}$$

$$p_{\text{uplift}_2} = -3.27 \cdot \text{psf}$$

Wind in the X-direction [Figure 6-21] (Wind into open side of roof acting on exposed truss member)

Wind on 3"x2" Tubular Truss Web Members

$$h_{3 \times 2} = 10.21 \text{ ft}$$

$$d_{3 \times 2} = 3 \text{ in}$$

$$\frac{h_{3 \times 2}}{d_{3 \times 2}} = 44$$

$$G_F = 2.0$$

$$P_{3 \times 2} := q_h \cdot G \cdot C_F \cdot d_{3 \times 2}$$

$$P_{3 \times 2} = 16.33 \cdot \frac{\text{lb}}{\text{ft}}$$

Wind on 5" SCH 40 Pipe Column

$$h_5 = 13.71 \text{ ft}$$

$$d_5 = 5.56 \text{ in}$$

$$\frac{h_5}{d_5} = 21$$

Say 25

$$\frac{d_5}{\text{ft}} \sqrt{\frac{q_h}{\text{psf}}} = 2.79 > 2.5 \Rightarrow$$

$$G_F = 0.7$$

-moderately smooth

$$P_{2 \times 3} := q_h \cdot G \cdot C_F \cdot d_5$$

$$P_{2 \times 3} = 10.59 \cdot \frac{\text{lb}}{\text{ft}}$$

P.4

```

*****
*
*          STAAD.Pro          *
*          Version 2004      Bld 1004.US.NRC *
*          Proprietary Program of          *
*          Research Engineers, Intl.       *
*          Date=   MAR 23, 2009          *
*          Time=   18:10:30             *
*
*          USER ID: Florrida Bridge and Transportati *
*****

```

1. STAAD SPACE
- INPUT FILE: 6x13 shelter WP.STD
2. START JOB INFORMATION
3. JOB NAME WINTER PARK 6X13 SHELTER
4. JOB NO 08-04.02
5. ENGINEER NAME MN
6. CHECKER NAME JAV
7. APPROVED NAME MN
8. ENGINEER DATE 23-MAR-09
9. CHECKER DATE 23-MAR-09
10. APPROVED DATE 23-MAR-09
11. END JOB INFORMATION
12. INPUT WIDTH 79
13. UNIT INCHES KIP
14. JOINT COORDINATES
15. 1 12 0 63; 2 12 117 63; 3 144 0 63; 4 144 117 63; 5 3 117 63; 6 20 117 63
16. 7 136 117 63; 8 153 117 63; 9 3 122 3; 10 3 119.08 38; 11 3 117.67 55
17. 12 3 116.33 71
18. 13 3 116 75; 14 20 122 3; 15 20 119.08 38; 16 20 117.67 55; 17 20 116.33 71
19. 18 20 116 75; 19 53 122 3; 20 53 119.08 38; 23 53 116 75; 24 103 122 3
20. 25 103 119.08 38; 28 103 116 75; 29 136 122 3; 30 136 119.08 38
21. 31 136 117.67 55
22. 32 136 116.33 71; 33 136 116 75; 34 153 122 3; 35 153 119.08 38
23. 36 153 117.67 55
24. 37 153 116.33 71; 38 153 116 75
25. MEMBER INCIDENCES
26. 1 1 2; 2 3 4; 3 5 2; 4 2 6; 5 7 4; 6 4 8; 7 9 10; 8 10 11; 9 11 5; 10 5 12
27. 11 12 13; 12 14 15; 13 15 16; 14 16 6; 15 6 17; 16 17 18; 17 19 20; 18 20 23
28. 21 24 25; 22 25 28; 25 29 30; 26 30 31; 27 31 7; 28 7 32; 29 32 33; 30 34 35
29. 31 35 36; 32 36 8; 33 8 37; 34 37 38; 35 9 14; 36 10 15; 37 11 16; 38 13 18
30. 39 14 19; 40 15 20; 43 18 23; 44 19 24; 45 20 25; 48 23 28; 49 24 29; 50 25 30
31. 53 28 33; 54 29 34; 55 30 35; 56 31 36; 57 32 37; 58 33 38; 59 12 17
32. UNIT FEET POUND
33. DEFINE MATERIAL START
34. ISOTROPIC STEEL
35. E 4.176E+009
36. POISSON 0.3
37. DENSITY 489.024
38. ALPHA 6.5E-006
39. DAMP 0.03
40. END DEFINE MATERIAL

97. 35 39 44 49 54 UNI Y -16.7
98. 37 56 UNI Y -53.9
99. 57 59 UNI Y -32.7
100. 38 58 UNI Y -16.3
101. 1 2 UNI GZ 10.6
102. LOAD 7 CASE B 180 DEG 2 WIND LOAD
103. MEMBER LOAD
104. 40 45 50 UNI Y 58.8
105. 36 55 UNI Y 42.5
106. 43 48 53 UNI Y 64.4
107. 35 39 44 49 54 UNI Y 5.6
108. 37 56 UNI Y 49.4
109. 57 59 UNI Y 29.9
110. 38 58 UNI Y 15.0
111. 1 2 UNI GZ 10.6
112. LOAD 8 X WIND LOAD ON CHORDS
113. MEMBER LOAD
114. 35 TO 40 43 TO 45 48 TO 50 53 TO 58 UNI GX 16.33
115. 1 2 UNI GZ 10.6
116. LOAD COMB 11 SERVICE
117. 1 1.0
118. LOAD COMB 12 SERVICE
119. 1 1.0 2 1.0
120. LOAD COMB 13 SERVICE
121. 1 1.0 3 1.0
122. LOAD COMB 14 SERVICE
123. 1 1.0 4 1.0
124. LOAD COMB 15 SERVICE
125. 1 1.0 5 1.0
126. LOAD COMB 16 SERVICE
127. 1 1.0 6 1.0
128. LOAD COMB 17 SERVICE
129. 1 1.0 7 1.0
130. LOAD COMB 18 SERVICE
131. 1 1.0 8 1.0
132. LOAD COMB 19 SERVICE
133. 1 1.0 4 0.75 8 0.75
134. LOAD COMB 20 SERVICE
135. 1 0.6 5 0.75 8 0.75
136. LOAD COMB 21 SERVICE
137. 1 1.0 6 0.75 8 0.75
138. LOAD COMB 22 SERVICE
139. 1 0.6 7 0.75 8 0.75
140. LOAD COMB 23 SERVICE
141. 1 1.0 4 0.75 2 0.75
142. LOAD COMB 24 SERVICE
143. 1 1.0 5 0.75 2 0.75
144. LOAD COMB 25 SERVICE
145. 1 1.0 6 0.75 2 0.75
146. LOAD COMB 26 SERVICE
147. 1 1.0 7 0.75 2 0.75
148. LOAD COMB 27 SERVICE
149. 1 1.0 8 0.75 2 0.75
150. LOAD COMB 28 SERVICE
151. 1 1.0 4 0.5625 8 0.5625 2 0.75
152. LOAD COMB 29 SERVICE

P.6

P.8

STAAD.PRO CODE CHECKING - (AISC 9TH EDITION)

ALL UNITS ARE - KIP INCR (UNLESS OTHERWISE NOTED)

MEMBER	TABLE	RESULT/ FX	CRITICAL COND/ MY	RATIO/ MZ	LOADING/ LOCATION
1	ST PIPS50		(AISC SECTIONS)		
		PASS	AISC- H1-3	0.495	23
		1.81 C	-51.56	21.41	117.00
2	ST PIPS50		(AISC SECTIONS)		
		PASS	AISC- H1-3	0.495	23
		1.81 C	-51.56	-21.41	117.00
		NOTE: DESIGN IN ACCORDANCE WITH ASD PROVISIONS FOR TUBES			
3	ST HSST3X2X0.25		(AISC SECTIONS)		
		PASS	AISC- H1-3	0.211	22
		0.17 C	-1.10	5.37	9.00
		NOTE: DESIGN IN ACCORDANCE WITH ASD PROVISIONS FOR TUBES			
4	ST HSST3X2X0.25		(AISC SECTIONS)		
		PASS	AISC- H1-3	0.552	25
		0.14 C	-0.26	17.66	0.00
		NOTE: DESIGN IN ACCORDANCE WITH ASD PROVISIONS FOR TUBES			
5	ST HSST3X2X0.25		(AISC SECTIONS)		
		PASS	AISC- H1-3	0.625	30
		0.22 C	-0.83	19.27	8.00
		NOTE: DESIGN IN ACCORDANCE WITH ASD PROVISIONS FOR TUBES			
6	ST HSST3X2X0.25		(AISC SECTIONS)		
		PASS	AISC- H2-1	0.271	21
		0.23 T	1.15	-7.22	0.00
		NOTE: DESIGN IN ACCORDANCE WITH ASD PROVISIONS FOR TUBES			
7	ST HSST3X2X0.25		(AISC SECTIONS)		
		PASS	AISC- H1-3	0.311	23
		0.01 C	0.00	10.18	35.12
		NOTE: DESIGN IN ACCORDANCE WITH ASD PROVISIONS FOR TUBES			
8	ST HSST3X2X0.25		(AISC SECTIONS)		
		PASS	AISC- H1-3	0.494	23
		0.04 C	0.37	15.72	17.06
		NOTE: DESIGN IN ACCORDANCE WITH ASD PROVISIONS FOR TUBES			
9	ST HSST3X2X0.25		(AISC SECTIONS)		
		PASS	AISC- H1-3	0.588	23
		0.08 C	0.33	18.78	8.03
		NOTE: DESIGN IN ACCORDANCE WITH ASD PROVISIONS FOR TUBES			
10	ST HSST3X2X0.25		(AISC SECTIONS)		
		PASS	AISC- H1-3	0.152	23
		0.09 C	0.54	-4.21	0.00
		NOTE: DESIGN IN ACCORDANCE WITH ASD PROVISIONS FOR TUBES			
11	ST HSST3X2X0.25		(AISC SECTIONS)		
		PASS	AISC- H1-3	0.045	23
		0.04 C	0.08	-1.35	0.00
		NOTE: DESIGN IN ACCORDANCE WITH ASD PROVISIONS FOR TUBES			
12	ST HSST3X2X0.25		(AISC SECTIONS)		
		PASS	AISC- H1-3	0.198	23
		0.04 C	0.13	6.30	35.12
		NOTE: DESIGN IN ACCORDANCE WITH ASD PROVISIONS FOR TUBES			
13	ST HSST3X2X0.25		(AISC SECTIONS)		
		PASS	AISC- H1-3	0.752	23
		0.08 C	0.38	24.12	17.06

P.10


ALL UNITS ARE -- KIP INCH (UNLESS OTHERWISE NOTED)

MEMBER	TABLE	RESULT/ FX	CRITICAL COND/ MY	RATIO/ MZ	LOADING/ LOCATION	
34	ST HSST3X2X0.25	(AISC SECTIONS)				
		PASS	AISC- H1-3	0.049	28	
		0.06 C	-0.14	-1.39	0.00	
		NOTE: DESIGN IN ACCORDANCE WITH ASD PROVISIONS FOR TUBES				
35	ST HSST3X2X0.25	(AISC SECTIONS)				
		PASS	AISC- H1-3	0.068	28	
		0.01 C	0.22	-1.94	17.00	
		NOTE: DESIGN IN ACCORDANCE WITH ASD PROVISIONS FOR TUBES				
36	ST HSST3X2X0.25	(AISC SECTIONS)				
		PASS	AISC- H1-3	0.164	23	
		0.04 C	-0.38	4.87	17.00	
		NOTE: DESIGN IN ACCORDANCE WITH ASD PROVISIONS FOR TUBES				
37	ST HSST3X2X0.25	(AISC SECTIONS)				
		PASS	AISC- H2-1	0.102	23	
		0.00 T	-0.54	2.64	17.00	
		NOTE: DESIGN IN ACCORDANCE WITH ASD PROVISIONS FOR TUBES				
38	ST HSST3X2X0.25	(AISC SECTIONS)				
		PASS	AISC- H1-3	0.150	25	
		0.10 C	0.17	4.63	17.00	
		NOTE: DESIGN IN ACCORDANCE WITH ASD PROVISIONS FOR TUBES				
39	ST HSST3X2X0.25	(AISC SECTIONS)				
		PASS	AISC- H1-3	0.240	23	
		0.01 C	0.14	-7.66	33.00	
		NOTE: DESIGN IN ACCORDANCE WITH ASD PROVISIONS FOR TUBES				
40	ST HSST3X2X0.25	(AISC SECTIONS)				
		PASS	AISC- H1-3	0.334	23	
		0.09 C	0.23	-10.60	33.00	
		NOTE: DESIGN IN ACCORDANCE WITH ASD PROVISIONS FOR TUBES				
43	ST HSST3X2X0.25	(AISC SECTIONS)				
		PASS	AISC- H1-3	0.209	25	
		0.19 C	-0.13	6.50	0.00	
		NOTE: DESIGN IN ACCORDANCE WITH ASD PROVISIONS FOR TUBES				
44	ST HSST3X2X0.25	(AISC SECTIONS)				
		PASS	AISC- H1-3	0.364	23	
		0.02 C	0.37	-10.37	25.00	
		NOTE: DESIGN IN ACCORDANCE WITH ASD PROVISIONS FOR TUBES				
45	ST HSST3X2X0.25	(AISC SECTIONS)				
		PASS	AISC- H1-3	0.414	23	
		0.08 C	0.42	-11.74	25.00	
		NOTE: DESIGN IN ACCORDANCE WITH ASD PROVISIONS FOR TUBES				
48	ST HSST3X2X0.25	(AISC SECTIONS)				
		PASS	AISC- H1-3	0.282	25	
		0.18 C	0.27	-7.91	25.00	
		NOTE: DESIGN IN ACCORDANCE WITH ASD PROVISIONS FOR TUBES				
49	ST HSST3X2X0.25	(AISC SECTIONS)				
		PASS	AISC- H1-3	0.240	23	
		0.01 C	0.14	-7.66	0.00	
		NOTE: DESIGN IN ACCORDANCE WITH ASD PROVISIONS FOR TUBES				
50	ST HSST3X2X0.25	(AISC SECTIONS)				
		PASS	AISC- H1-3	0.334	23	
		0.09 C	0.23	-10.60	0.00	
		NOTE: DESIGN IN ACCORDANCE WITH ASD PROVISIONS FOR TUBES				
53	ST HSST3X2X0.25	(AISC SECTIONS)				
		PASS	AISC- H1-3	0.273	21	

P.12

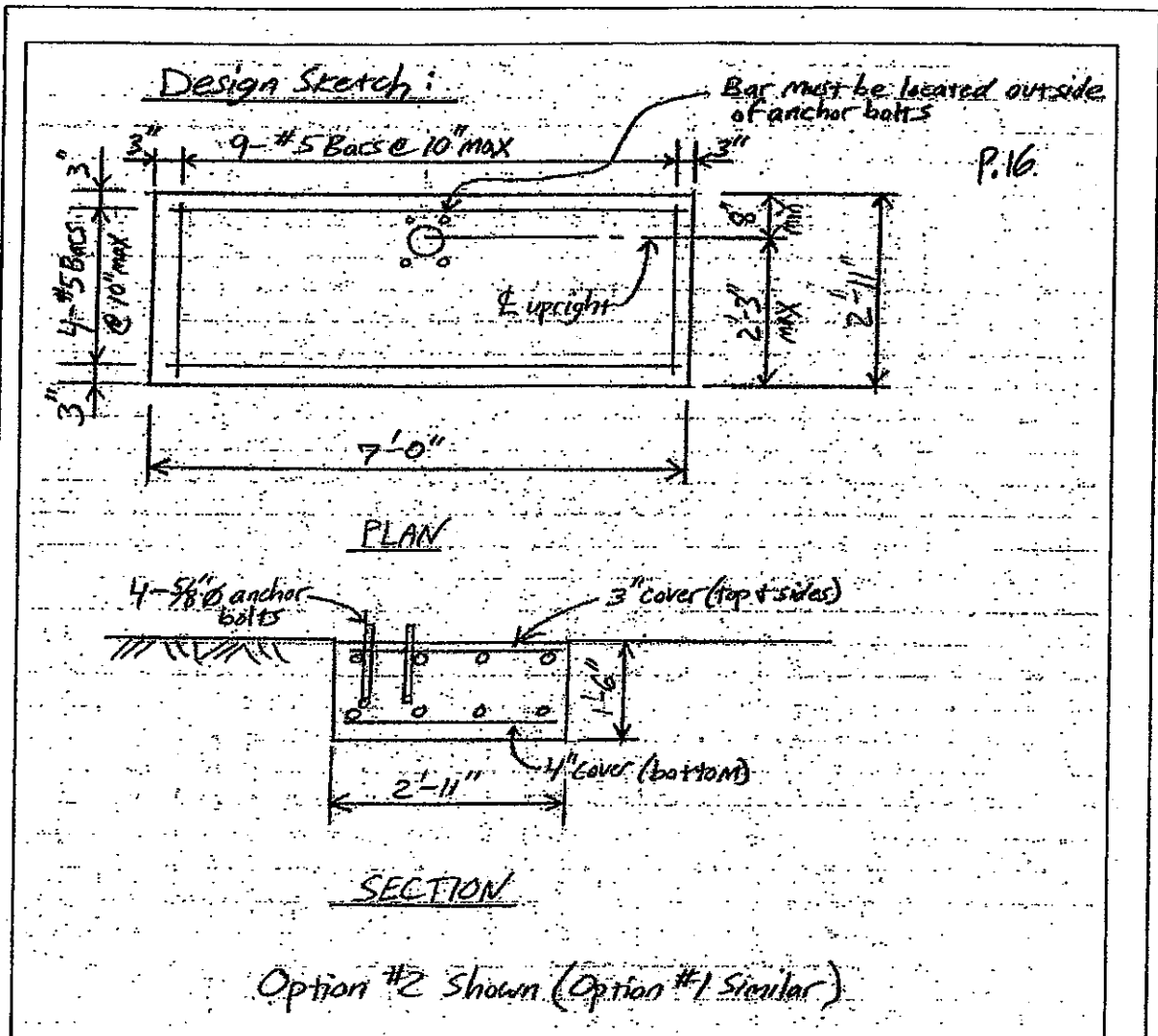
SUPPORT REACTIONS -UNIT KIP INCH STRUCTURE TYPE = SPACE

INT	LOAD	FORCE-X	FORCE-Y	FORCE-Z	MOM-X	MOM-Y	MOM Z
1	1	0.06	0.62	0.00	10.81	-0.08	-2.41
	2	0.13	0.81	0.00	19.51	-0.18	-5.07
	3	0.03	0.15	0.00	9.00	-0.04	-1.24
	4	0.15	0.97	-0.10	28.77	-0.20	-5.68
	5	-0.11	-0.77	-0.10	-37.34	0.15	4.38
	6	0.18	1.02	-0.10	6.87	-0.24	-6.74
	7	-0.14	-0.82	-0.10	-12.99	0.20	5.56
	8	-0.34	-0.18	-0.03	1.18	2.48	28.64
	11	0.06	0.62	0.00	10.81	-0.08	-2.41
	12	0.19	1.43	0.00	30.32	-0.26	-7.48
	13	0.09	0.77	0.00	19.81	-0.13	-3.65
	14	0.21	1.59	-0.10	39.58	-0.28	-8.09
	15	-0.05	-0.15	-0.10	-26.53	0.07	1.97
	16	0.24	1.64	-0.10	17.68	-0.32	-9.15
	17	-0.08	-0.20	-0.10	-2.18	0.11	3.15
	18	-0.28	0.44	-0.03	11.99	2.40	26.23
	19	-0.08	1.21	-0.10	33.27	1.63	14.81
	20	-0.30	-0.34	-0.10	-20.63	1.92	23.32
	21	-0.06	1.25	-0.10	16.85	1.60	14.02
	22	-0.33	-0.38	-0.10	-2.37	1.96	24.20
	23	0.27	1.96	-0.08	47.02	-0.36	-10.47
	24	0.08	0.65	-0.08	-2.56	-0.10	-2.93
	25	0.29	1.99	-0.08	30.60	-0.39	-11.26
	26	0.05	0.61	-0.08	15.70	-0.07	-2.04
	27	-0.09	1.09	-0.02	26.33	1.64	15.27
	28	0.05	1.67	-0.07	42.29	1.07	6.70
	29	-0.09	0.70	-0.07	5.11	1.26	12.36
	30	0.07	1.70	-0.07	29.97	1.05	6.11
	31	-0.11	0.66	-0.07	18.80	1.29	13.02
	32	0.19	1.34	-0.10	35.26	-0.25	-7.13
	33	-0.08	-0.40	-0.10	-30.85	0.10	2.94
	34	0.21	1.39	-0.10	13.35	-0.29	-8.18
	35	-0.11	-0.45	-0.10	-6.50	0.14	4.11
	36	-0.30	0.19	-0.03	7.67	2.43	27.19
	37	-0.11	0.96	-0.10	28.95	1.66	15.77
	38	-0.30	-0.34	-0.10	-20.63	1.92	23.32
	39	-0.09	1.00	-0.10	12.52	1.63	14.98
	40	-0.33	-0.38	-0.10	-2.37	1.96	24.20
3	1	-0.06	0.62	0.00	10.81	0.08	2.41
	2	-0.13	0.81	0.00	19.51	0.18	5.07
	3	-0.03	0.15	0.00	9.00	0.04	1.24
	4	-0.15	0.97	-0.10	28.77	0.20	5.68
	5	0.11	-0.77	-0.10	-37.34	-0.15	-4.38
	6	-0.18	1.02	-0.10	6.87	0.24	6.74
	7	0.14	-0.82	-0.10	-12.99	-0.20	-5.56
	8	-0.34	0.18	-0.18	-13.27	2.48	28.64
	11	-0.06	0.62	0.00	10.81	0.08	2.41
	12	-0.19	1.43	0.00	30.32	0.26	7.48

	Job No	08-04.02	Sheet No	1	Rev	p.14
	Part					
Software licensed to Florida Bridge and Transportation	Ref					
Job Title Winter Park 6x13 Shelter	By MN	Date 23-Mar-09	Chd JAV			
Client	File 6x13 shelter WP.std	Date/Time 23-Mar-2009 18:10				

Reaction Summary

	Node	L/C	Horizontal FX (kip)	Vertical FY (kip)	Horizontal FZ (kip)	Moment MX MY MZ (kip*ft)		
Max FX	1	25:SERVICE	0.293	1.995	-0.078	2.550	-0.033	-0.939
Min FX	3	30:SERVICE	-0.452	1.904	-0.159	1.820	0.145	2.176
Max FY	1	25:SERVICE	0.293	1.995	-0.078	2.550	-0.033	-0.939
Min FY	1	35:SERVICE	-0.107	-0.452	-0.103	-0.542	0.012	0.343
Max FZ	3	13:SERVICE	-0.095	0.770	0.000	1.651	0.011	0.304
Min FZ	3	19:SERVICE	-0.429	1.483	-0.213	1.869	0.174	2.346
Max MX	1	23:SERVICE	0.273	1.957	-0.078	3.919	-0.030	-0.873
Min MX	3	20:SERVICE	-0.208	-0.070	-0.213	-2.623	0.150	1.637
Max MY	3	18:SERVICE	-0.404	0.800	-0.180	-0.206	0.214	2.668
Min MY	1	25:SERVICE	0.293	1.995	-0.078	2.550	-0.033	-0.939
Max MZ	3	18:SERVICE	-0.404	0.800	-0.180	-0.206	0.214	2.668
Min MZ	1	25:SERVICE	0.293	1.995	-0.078	2.550	-0.033	-0.939



Analyze Eccentric Footing Refer to Design Sketch (Option 2) [LFD 4.4.7.1]

Service Load Case 23 Forces:

$$F_y = 1.96 \text{ kip}$$

$$M_x = 3.92 \text{ kip-ft}$$

$$M_z = -0.876 \text{ kip-ft}$$

$$L = 2.92 \text{ ft}$$

$$B = 7.0 \text{ ft}$$

$$d = 1.5 \text{ ft}$$

$$\gamma_{\text{conc}} = 150 \text{ pcf}$$

$$C_{\text{edge}} = 8 \text{ in}$$

$$C_{\text{ol_offset}} := \frac{L}{2} - C_{\text{ol_edge}} \quad C_{\text{ol_offset}} = 0.79 \text{ ft} \quad W_{\text{tfg}} := L \cdot B \cdot d \cdot \gamma_{\text{conc}} \quad W_{\text{tfg}} = 4.6 \text{ kip}$$

$$M_{e_x} := F_y \cdot C_{\text{ol_offset}} \quad M_{e_x} = 1.55 \text{ kip-ft} \quad Q := W_{\text{tfg}} + F_y \quad Q = 6.56 \text{ kip}$$

$$e_x := \frac{|M_z|}{Q} \quad e_x = 1.59 \text{ in} \quad \frac{B}{6} = 14 \text{ in} \quad e_z := \frac{M_{e_x} + M_x}{Q} \quad e_z = 10.02 \text{ in} \quad \frac{L}{6} = 5.84 \text{ in} \quad \frac{L}{2} = 17.52 \text{ in}$$

Check Ultimate Bearing Pressures [LFD 4.4.7.1]:

P.18 of 18

$$B' := B - 2 \cdot e_x \quad B' = 6.73 \text{ ft} \quad [\text{LFD 4.4.7.1.1.1-1}]$$

$$L' := L - 2 \cdot e_z \quad L' = 1.25 \text{ ft} \quad [\text{LFD 4.4.7.1.1.1-2}]$$

$$A' := B' \cdot L' \quad A' = 8.42 \text{ ft}^2 \quad [\text{LFD 4.4.7.1.1.1-3}]$$

$$\phi = 30 \text{ deg}$$

$$N_c = 30.14$$

$$N_q = 18.4$$

$$N_{\gamma} = 22.4$$

[Table 4.4.4.1A]

Shape Factors 4.4.7.1.1.2: $5 \cdot L = 14.6 \text{ ft}$ $B = 7 \text{ ft}$ For $B < 5L$

$$S_{\phi} = 1.05$$

$$S_c := 0 \quad \text{cohesionless} \quad [\text{LFD 4.4.7.1.1.2-1}]$$

$$S_q := 1 + \frac{L'}{B'} \cdot \tan(\phi) \quad S_q = 1.11 \quad [\text{LFD 4.4.7.1.1.2-2}]$$

$$S_{\gamma} := 1 - 0.4 \cdot \left(\frac{L'}{B'} \right) \quad S_{\gamma} = 0.93 \quad [\text{LFD 4.4.7.1.1.2-3}]$$

$$q := d \cdot \gamma_{\text{soil}} \quad q = 0.16 \text{ ksf}$$

$$q_{\text{ult}} := 0.5 \gamma_{\text{soil}} \cdot L \cdot N_{\gamma} \cdot S_{\gamma} + q \cdot N_q \cdot S_q \quad q_{\text{ult}} = 6.39 \text{ ksf}$$

$$FS = 3$$

$$\frac{q_{\text{ult}}}{FS} = 2.13 \text{ ksf}$$

$$\text{check} := \text{if} \left(\frac{q_{\text{ult}}}{FS} > q_{\text{max}_1}, \text{"OK"}, \text{"NG"} \right)$$

$$\text{check} = \text{OK}$$